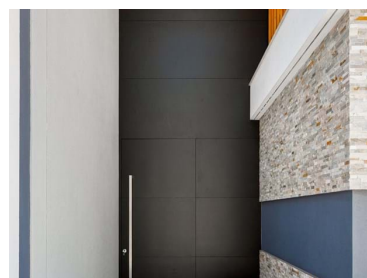




## Quarteira - Villa



 **4** Bedrooms    
  **6** Bathrooms    
  **561** Area (m<sup>2</sup>)    
  **1589** Land Area (m<sup>2</sup>)    
  Garage    
  Swimming Pool    
**2 997 500 €** (EUR €)

### V4 | 561.00 m<sup>2</sup> | Marina Vilamoura

There are houses and there are houses, this property is more than a house, it is a lifestyle of exclusivity, refinement and endless possibilities.

With a privileged location, the "Vilamoura Lines" project is located in the center of Vilamoura, 1km from Vilamoura Marina, beaches and golf, and transcends the normal construction, design elements and details that come together in a "Concept of Elegance" of these 4 works of art.

With four en-suite bedrooms, the master bedroom features an elegant walk-in closet. The spacious 260m<sup>2</sup> basement for two potential storage spaces, a leisure area, guest bathroom and garage for 4 cars. With four bedrooms and six bathrooms, each villa has between 556 and 561m<sup>2</sup> on a plot between 1482 and 1589m<sup>2</sup>. The kitchen, a magnificently equipped space, flows seamlessly into the dining area, creating a space that is as functional as it is welcoming.



**Thomas Caminho**

911762970 <sup>2</sup>

info@arqlizproperties.pt

**T +351 911 762 970 <sup>2</sup> · E info@arqlizproperties.pt**  
**Estrada da Kadoc, Cerca da Areia, Edifício Liz, Boliqueime**  
**AMI 19529**

<sup>1</sup> (Call to national fixed network) | <sup>2</sup> (Call to national mobile network)



Entertainment options are plentiful with a living room with a bioethanol fireplace that creates a warm presence in your evenings in the reading or TV space and connected to the fantastic covered terrace and the blue reflection of the turquoise pool.

The outdoor space is designed for relaxation and fun, with a heated pool with Balinese tiles, a garden and an outdoor dining area. Property security is paramount, with full CCTV coverage outside and full home automation allowing for peace of mind.

For golf lovers, Vilamoura is a true paradise, with several world-class golf courses just minutes from your doorstep. The golden sandy beaches invite you to long days of sun and sea, while the lively marina, awarded as one of the best in Europe, offers a variety of restaurants, bars and shops. For the more adventurous, there are water sports, boat trips and excursions to explore the Algarve coast.

The construction company:

With more than 40 years of experience in the construction sector, Mr. Rui Caminho puts his knowledge and constant evolution over the years in perfectionism in detail and quality of construction. From the foundation to the last screw, the respect and transparency of its so-called "good construction" is visible.



**Thomas Caminho**

911762970 <sup>2</sup>

info@arqlizproperties.pt

**T +351 911 762 970 <sup>2</sup> · E info@arqlizproperties.pt**  
**Estrada da Kadoc, Cerca da Areia, Edifício Liz, Boliqueime**  
**AMI 19529**

<sup>1</sup> (Call to national fixed network) | <sup>2</sup> (Call to national mobile network)



## Property Features

- Heating
- Fitted wardrobes
- Fireplace
- Equipped kitchen
- Underfloor
- Proximity: Airport, Beach, Golf course, Shopping, Restaurants, City, Open field, Hospital, Pharmacy, Public Transport, Schools, Public Swimming Pools
- Terrace
- Built year: 2022
- Laundry
- Basement
- Views: Pool view, Garden view
- Security alarm
- Electric garage gate
- Walking distance to beach
- Central location
- Solar heating
- Domotics
- Energetic certification: A
- Mains water
- Air conditioning
- Under floor heating
- Central vacuum system
- Walk-in wardrobe
- Pool
- Garden
- Garage
- Floors: 3
- Drive way
- Storage / utility room
- Video entry system
- Double glazing
- Main drainage
- Quiet Location
- Parking space
- Sealed land area
- Security door
- Solar orientation: South
- Balcony



**Thomas Caminho**

911762970 <sup>2</sup>

info@arqlizproperties.pt

**T +351 911 762 970 <sup>2</sup> · E info@arqlizproperties.pt**  
**Estrada da Kadoc, Cerca da Areia, Edifício Liz, Boliqueime**  
**AMI 19529**

<sup>1</sup> (Call to national fixed network) | <sup>2</sup> (Call to national mobile network)